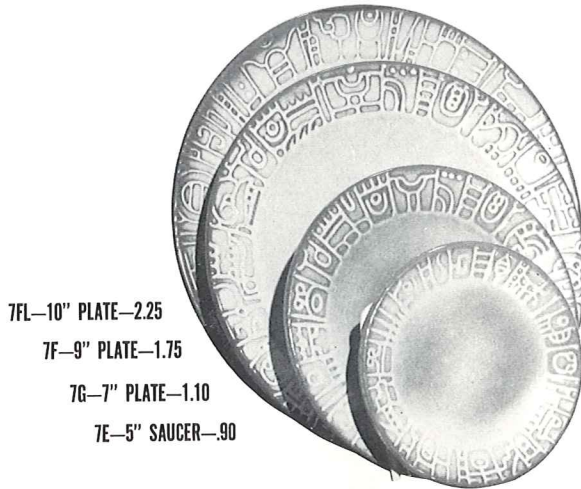




7V-2 QT. BAKER-4.00



7FL-10" PLATE-2.25

7F-9" PLATE-1.75

7G-7" PLATE-1.10

7E-5" SAUCER-.90



7D-60 OZ. PITCHER-4.00



7W-3 QT. BAKER-5.00



7B-SUGAR WITH LID-1.75



7A-6 OZ. CREAMER-1.25



7C-CUP-1.00



7M-14 OZ. MUG-1.50



7U-10 OZ. BAKER-2.00



7QS-13" STEAK PLATTER (SHALLOW PLATTER)-2.25



7CL-8 OZ. MUG-1.25



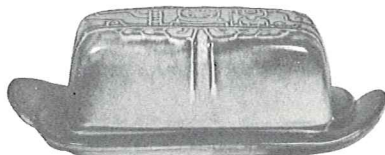
7XO-8 OZ. FRUIT-.90



7HS-SALT & PEPPER-1.50



7X-14 OZ. CHILI-SOUP-1.25



7K-BUTTER DISH-2.50



7Q-13" DEEP PLATTER-3.50



7XL-20 OZ. SALAD-1.40



7PS-9" TRAY-1.50



7FC-15" CHOP PLATE-10.00



7N-1 QT. VEGETABLE BOWL-2.00



7T-6 CUP TEAPOT-3.50



7P-17" DEEP PLATTER-7.00



7J-2 CUP TEAPOT-2.00